



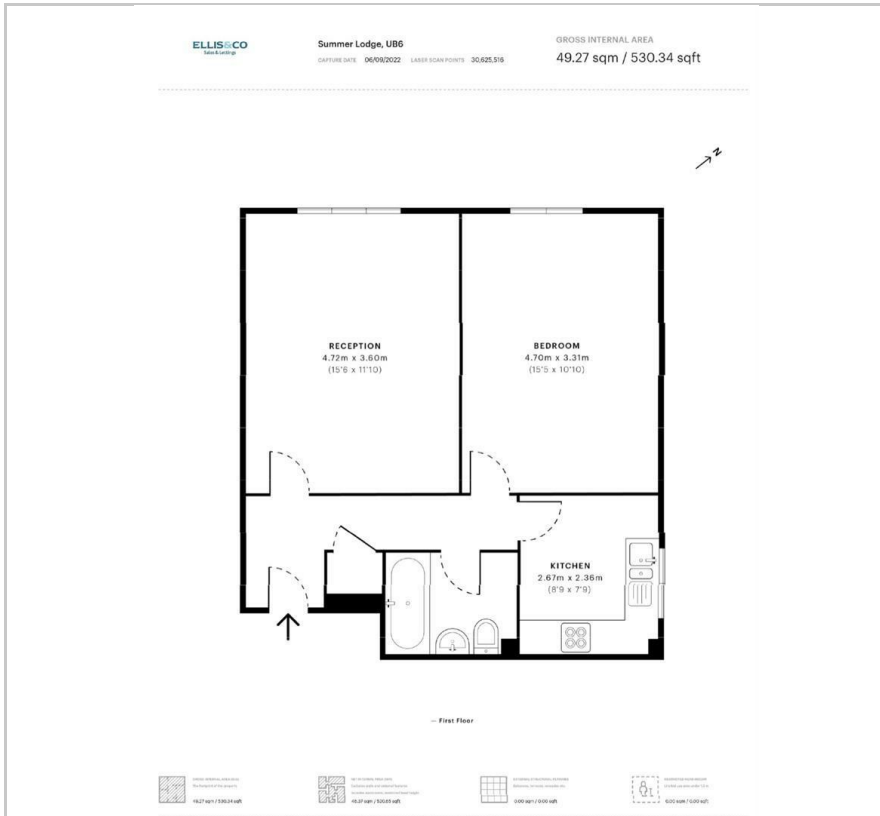
MOVE INN ESTATES
MAKING THE RIGHT MOVE



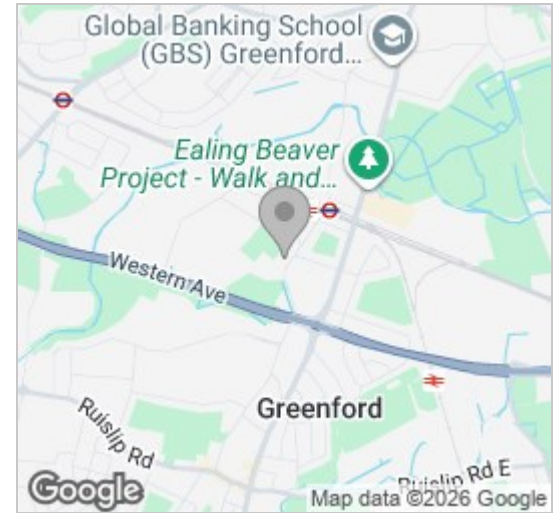
Oldfield Lane North
Greenford, UB6 8PN
£1,400 Per Month



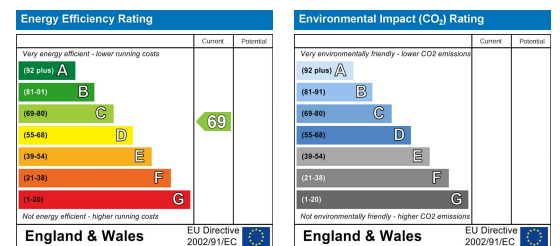
Floor Plan



Area Map



Energy Efficiency Graph



Viewing

Please contact our Move Inn Estates - Sales Office on 0208 574 4966 if you wish to arrange a viewing appointment for this property or require further information.

- Bright and spacious one-bedroom flat in a sought-after Greenford location
- Separate fitted kitchen with integrated oven and induction hob
- Allocated parking included for added convenience
- Generous living area ideal for relaxing or entertaining
- Large double bedroom with excellent storage space
- Just a 6-minute walk to Greenford Station with easy access to Central London



Move Inn Estates is delighted to present this charming one bedroom flat located on Oldfield Lane North in the desirable area of Greenford. Built in 1992, this purpose-built residence offers a comfortable living space of 495 square feet, making it an ideal choice for individuals or couples seeking a long-term let.

As you enter the property, you will find a spacious and bright living room, perfect for entertaining friends and family. The separate fitted kitchen is equipped with an integrated oven and an electric induction hob, providing a practical space for culinary enthusiasts. The large double bedroom boasts ample storage, ensuring that you have plenty of room for your belongings. Additionally, the flat features a well-appointed shower room.

The property is unfurnished and excludes all bills, allowing you the freedom to personalise your new home. It also comes with allocated parking, a valuable asset in this sought-after location. Please note that pets are not permitted.

Summer Lodge is ideally situated just a six-minute walk from Greenford tube station, offering excellent transport links to London via the Central Line. For those who prefer to drive, the A40 and M25 are easily accessible, making commuting a breeze. Families will appreciate the proximity to William Perkins Church of England School, which is only a short stroll away.

We highly recommend scheduling a viewing to fully appreciate what this lovely flat has to offer. For the latest property news and updates, be sure to follow our YouTube channel and Instagram @moveinnestates. We look forward to helping you find your new home.



These particulars, whilst believed to be accurate are set out as a general outline only for guidance and do not constitute any part of an offer or contract. Intending purchasers should not rely on them as statements of representation of fact, but must satisfy themselves by inspection or otherwise as to their accuracy. No person in this firm's employment has the authority to make or give any representation or warranty in respect of the property.